

TIP PROJECT: W-5314

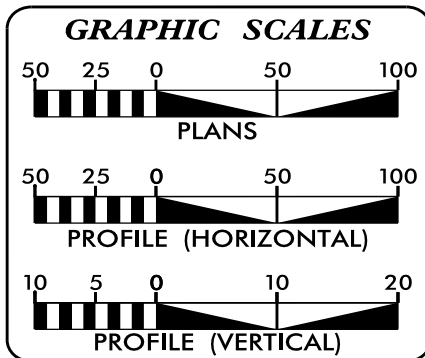
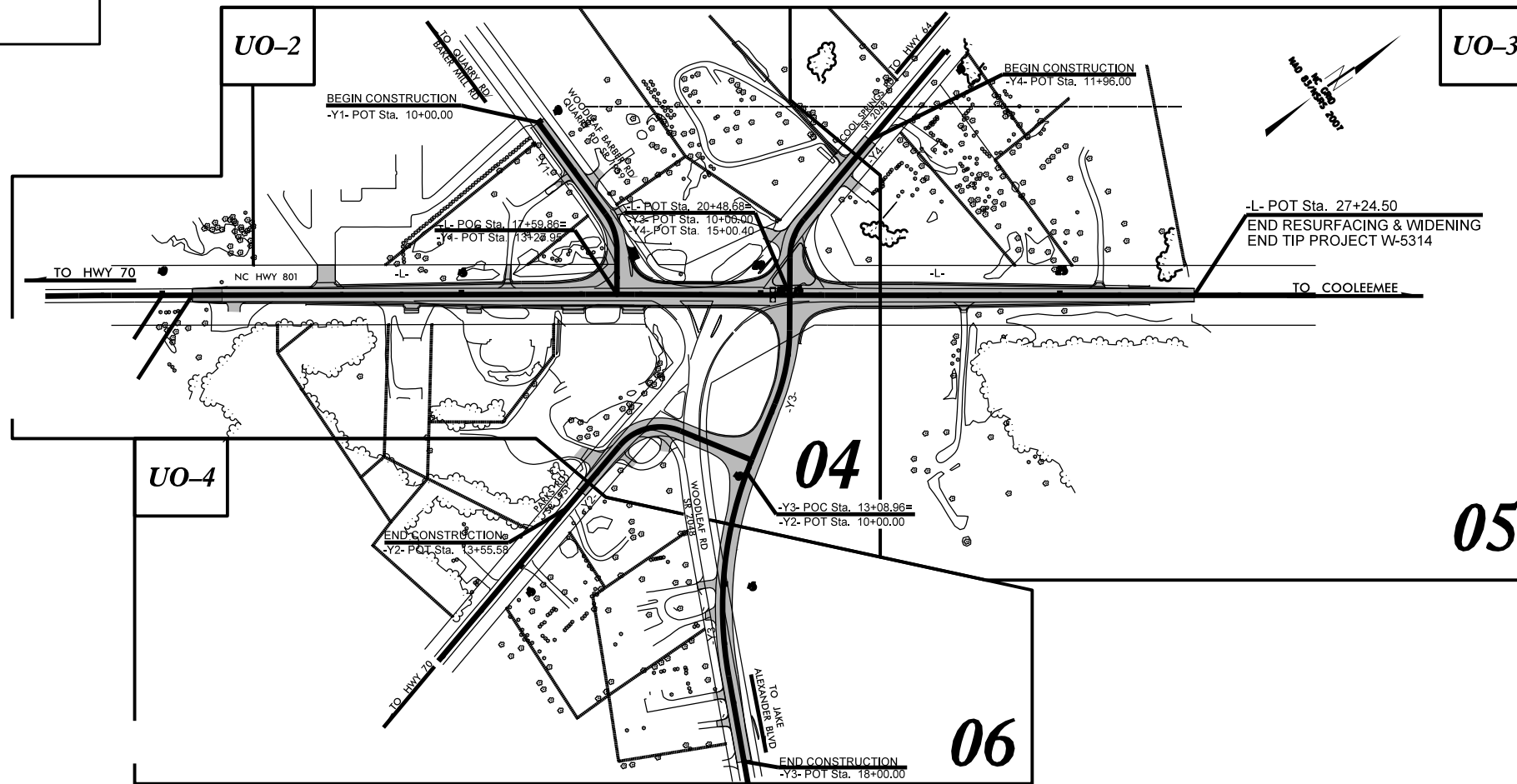
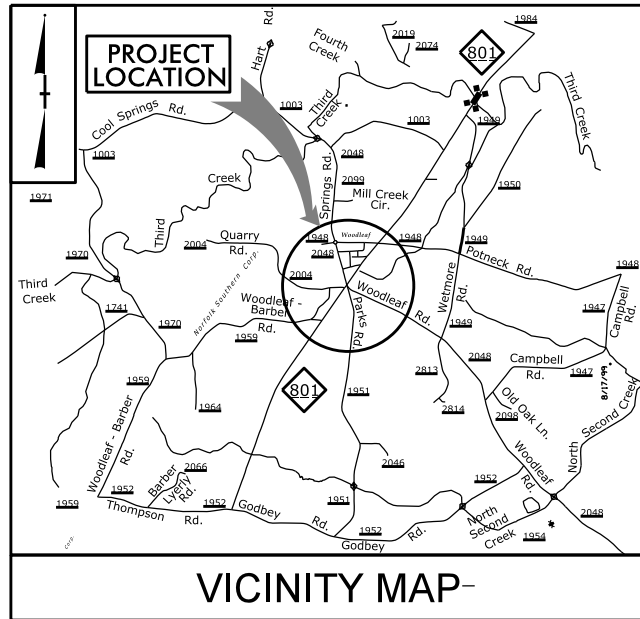
T.I.P. NO.	SHEET NO.
W-5314	UO-1

STATE OF NORTH CAROLINA
DIVISION OF HIGHWAYS

**UTILITIES BY OTHERS PLANS
ROWAN COUNTY**

LOCATION: NC 801 AT SR 2048 COOL SPRINGS/WOODLEAF RD. AND SR 1959 WOODLEAF BARBER RD/QUARRY RD. AND SR 1951 PARKS RD. AT SR 2048 WOODLEAF RD.

TYPE OF WORK: UTILITIES BY OTHERS




INDEX OF SHEETS

SHEET NO.	DESCRIPTION
UO-1	TITLE SHEET
UO-2 THRU UO-4	UTILITY BY OTHERS PLAN SHEETS

UTILITY OWNERS ON PROJECT

(A) Duke Energy	Power
(B) AT&T	Telephone
(C) TWC	CATV
(D) PNG	Natural Gas



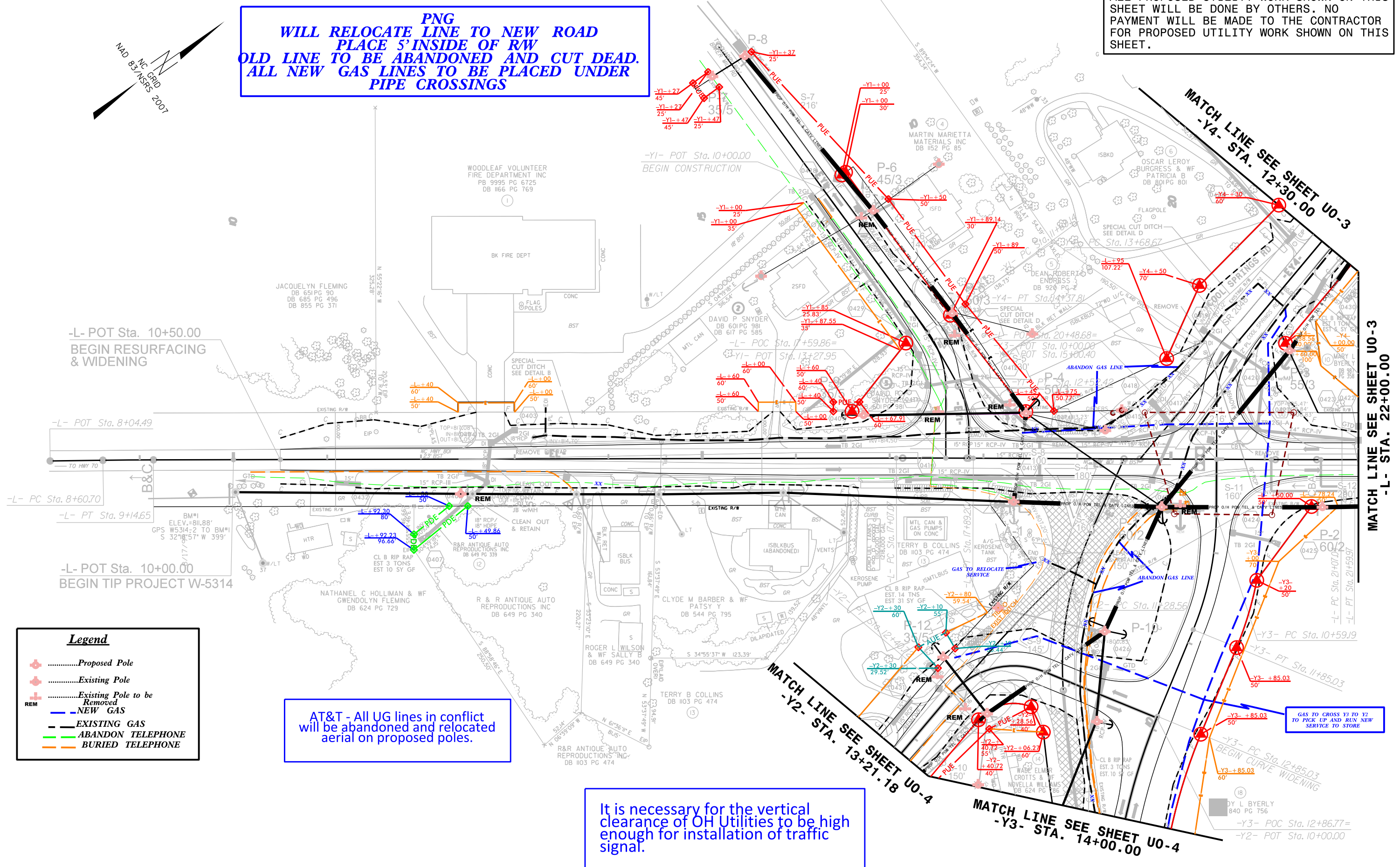
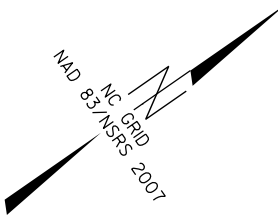
PREPARED IN THE OFFICE OF:
DIVISION OF HIGHWAYS
DIVISION 9
375 SILAD CREEK PARKWAY
WINSTON-SALEM NC 27127

DAVID TRANTHAM DIVISION UTILITY ENG.
DAVID TALBERT DIVISION UTILITY COORDINATOR

UTILITIES BY OTHERS

NOTE:
ALL PROPOSED UTILITY WORK SHOWN ON THIS SHEET WILL BE DONE BY OTHERS. NO PAYMENT WILL BE MADE TO THE CONTRACTOR FOR PROPOSED UTILITY WORK SHOWN ON THIS SHEET.

PNG
WILL RELOCATE LINE TO NEW ROAD
PLACE 5' INSIDE OF RW
OLD LINE TO BE ABANDONED AND CUT DEAD.
ALL NEW GAS LINES TO BE PLACED UNDER
PIPE CROSSINGS



-L- POT Sta. 10+50.00
BEGIN RESURFACING & WIDENING

-L- POT Sta. 8+04.49

-L- PC Sta. 8+60.70

-L- PT Sta. 9+14.65

-L- POT Sta. 10+00.00
BEGIN TIP PROJECT W-5314

MATCH LINE SEE SHEET UO-3
-Y4- STA. 12+30.00

MATCH LINE SEE SHEET UO-3
-L- STA. 22+00.00

MATCH LINE SEE SHEET UO-4
-Y2- STA. 13+21.18

MATCH LINE SEE SHEET UO-4
-Y3- STA. 14+00.00

Legend

- Proposed Pole
- Existing Pole
- Existing Pole to be Removed
- NEW GAS
- ABANDON TELEPHONE
- BURIED TELEPHONE
- EXISTING GAS

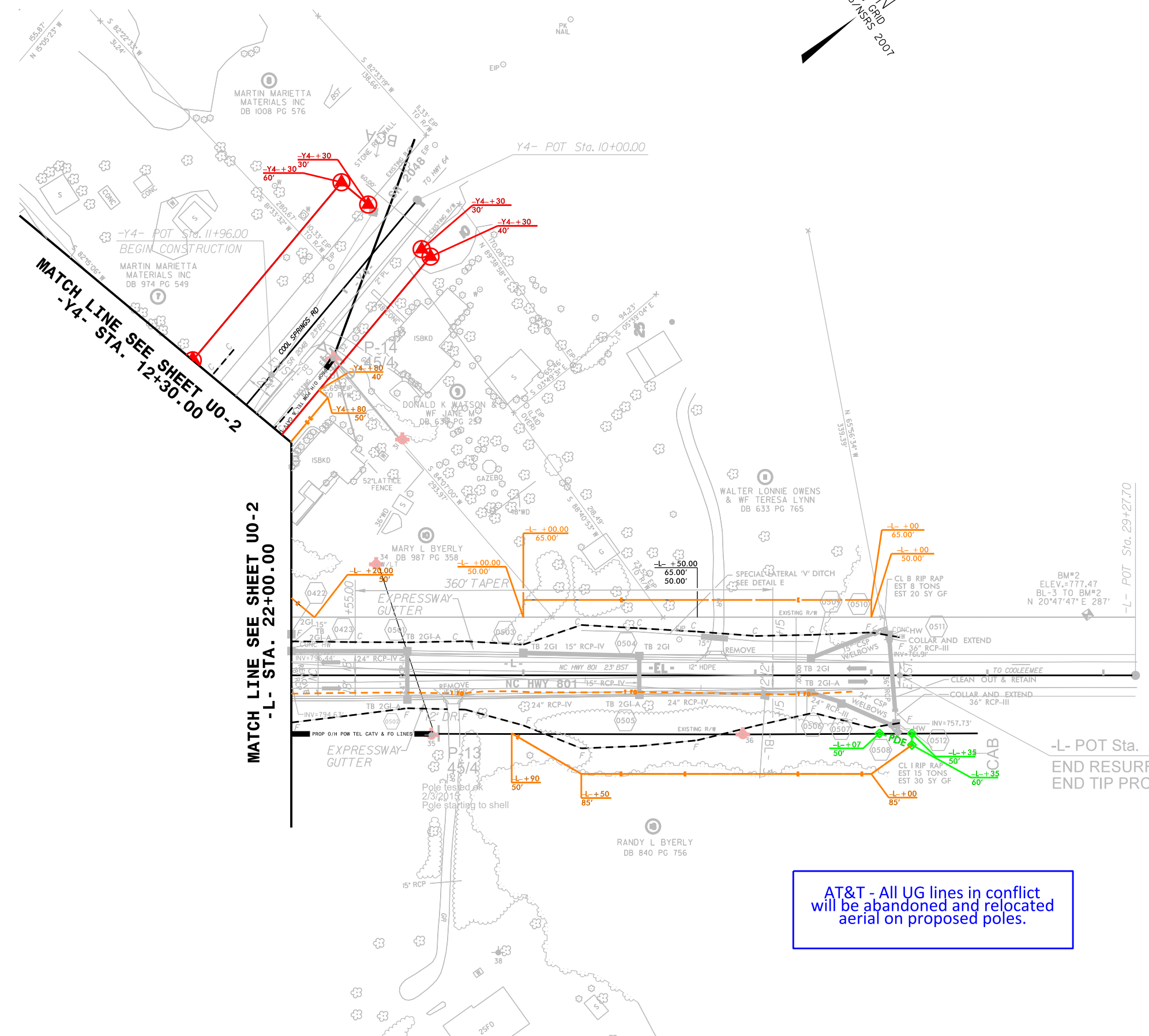
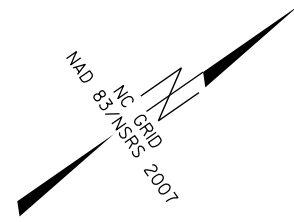
AT&T - All UG lines in conflict will be abandoned and relocated aerial on proposed poles.

It is necessary for the vertical clearance of OH Utilities to be high enough for installation of traffic signal.

GAS TO CROSS Y3 TO Y2 TO PICK UP AND RUN NEW SERVICE TO STORE

UTILITIES BY OTHERS

NOTE:
ALL PROPOSED UTILITY WORK SHOWN ON THIS SHEET WILL BE DONE BY OTHERS. NO PAYMENT WILL BE MADE TO THE CONTRACTOR FOR PROPOSED UTILITY WORK SHOWN ON THIS SHEET.



MATCH LINE SEE SHEET UO-2
-Y4- STA. 12+30.00

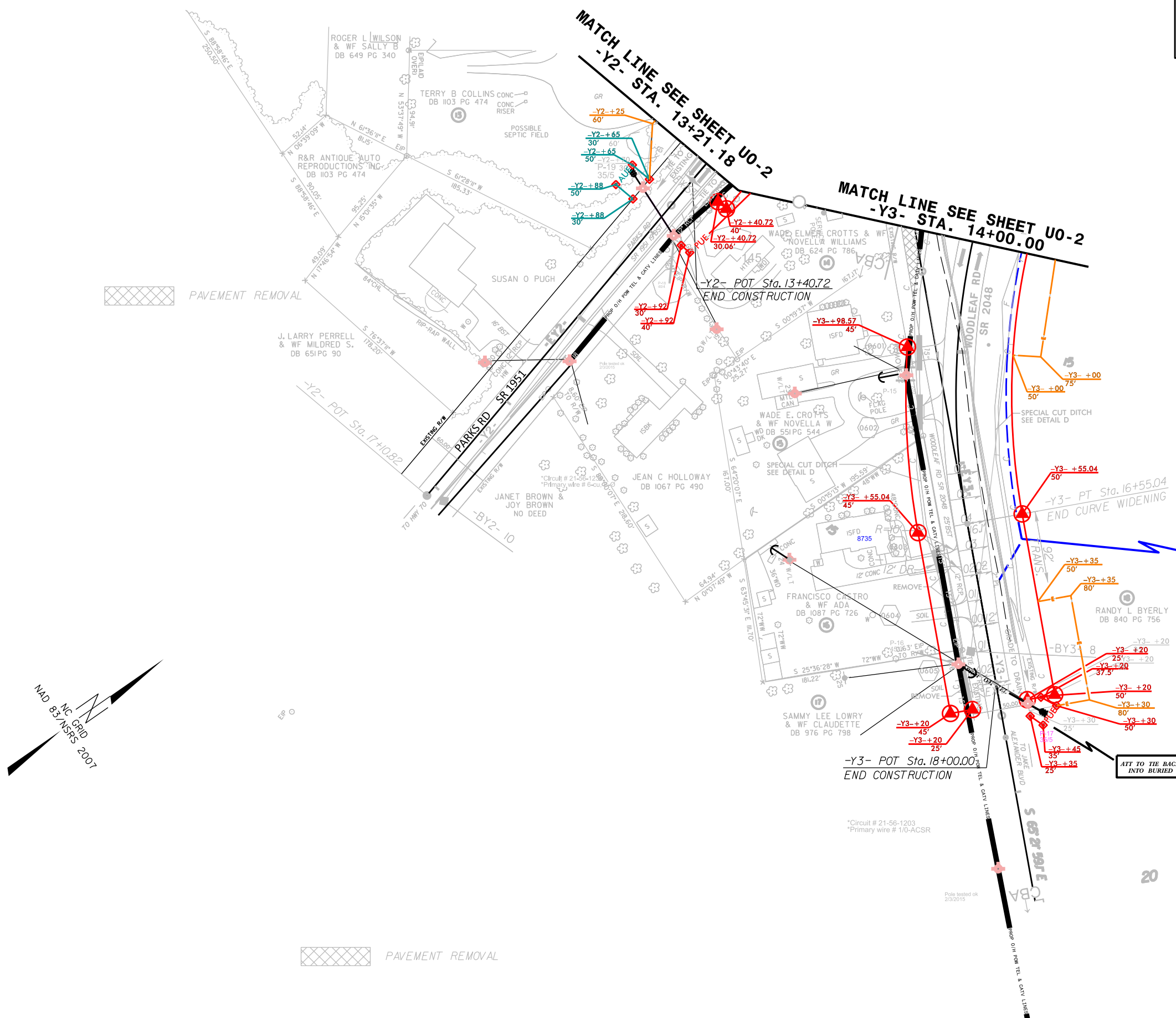
MATCH LINE SEE SHEET UO-2
-L- STA. 22+00.00

-L- POT Sta. 27+24.50
END RESURFACING & WIDENING
END TIP PROJECT W-5314

AT&T - All UG lines in conflict will be abandoned and relocated aerial on proposed poles.

UTILITIES BY OTHERS

NOTE:
 ALL PROPOSED UTILITY WORK SHOWN ON THIS SHEET WILL BE DONE BY OTHERS. NO PAYMENT WILL BE MADE TO THE CONTRACTOR FOR PROPOSED UTILITY WORK SHOWN ON THIS SHEET.



GAS TO TIE INTO THE SERVICE IN FRONT OF CASTRO HOUSE

AT&T - All UG lines in conflict will be abandoned and relocated aerial on proposed poles.

PAVEMENT REMOVAL

PAVEMENT REMOVAL

